

Welcome to the Township of Amaranth Official Plan Review Community Open House

Welcome!

Welcome to the Township of Amaranth Official Plan Review Community Open House! Please, follow the panels to gain an understanding of the Official Plan Review process, updated Official Plan mapping, and key proposed changes. Members of the Project Team are available for questions and comments, and we also welcome you to provide feedback by filling out our comment form. If you have any questions or comments following the open house, you can send these to the Project Team – contact information is provided on the final panel for any future comments or questions which can be submitted via telephone, mail or email.

Township of Amaranth Land Acknowledgement

The Township of Amaranth is located within the boundaries of the Haldimand Tract and Treaty 18, the traditional lands of the Anishinaabeg, Haudenosaunee, Tionontati, and Attawandaron people and is the home of First Nations, Métis, and Inuit peoples. We declare to honour and respect the past and present connection of Indigenous peoples with this land, its waterways and resources. At this time of truth and reconciliation, we welcome the opportunity to work together towards new understandings and new relationships and ask for guidance in all we do.

Meet the Project Team



MHBC
Pierre Chauvin,
Partner



MHBC
Nick Bogaert,
Associate



MHBC
Chelsea Brooks,
Senior Planner

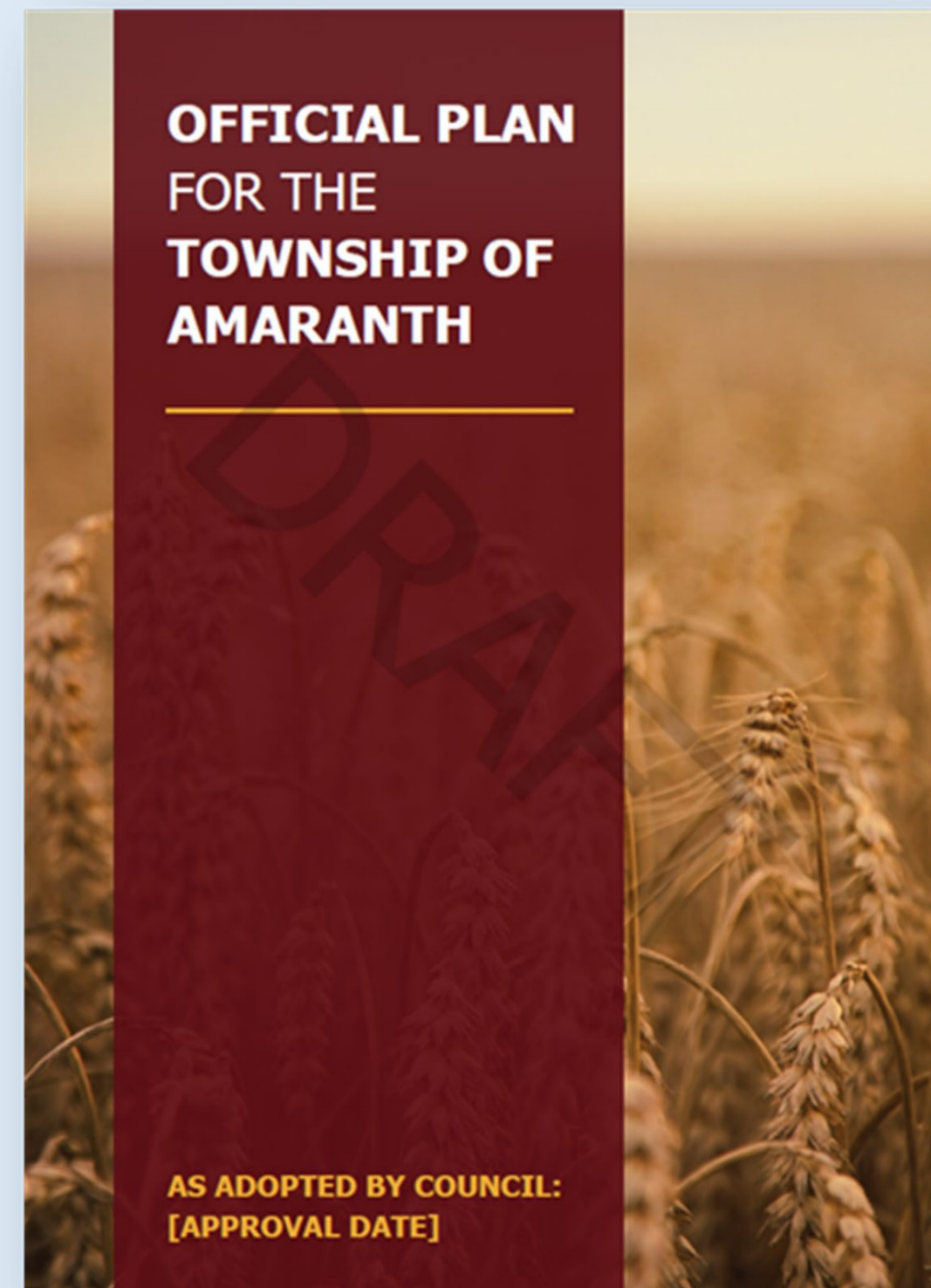


**OFFICIAL PLAN
FOR THE
TOWNSHIP OF
AMARANTH**

AS ADOPTED BY COUNCIL:
[APPROVAL DATE]



Welcome to the Township of Amaranth Official Plan Review Community Open House



Background:

- The current Township Official Plan was approved in 2004.
- The County completed their Official Plan review in 2025.
- In 2025, the Township retained MHBC to prepare and update to the Official Plan.

Key Goals/ Objectives of the Official Plan Review:

1. Retain & advance local planning objectives
2. Consider local context in growth management
3. Update ADU, Consent, SABE, & Agricultural Policies
4. Settlement Boundary Re-allocation
5. Reorganization of Official Plan
6. Policy Conformity with PPS & County Official Plan
7. Policy Consolidation

Key Updates:

- Mapping updates [Sourcewater Protection, Rural & Agricultural designations (based on the LEAR process), Natural Heritage designation (to align with Conservation Authority and County mapping), aggregate resource areas, community area boundaries]
- Policy Updates:
 - Permissions for additional residential units (ARUs)
 - Permissions for on-farm diversified uses (OFDUs) and clarification of permissions for agricultural-related uses
 - Consent policies including for surplus farm dwellings resulting from a farm consolidation
 - Policies for settlement area boundary expansions
 - Policies for sourcewater protection
 - Policies for mineral aggregate resource areas and operations
 - Policies for Greenbelt Protected Countryside (to align with Greenbelt Plan)

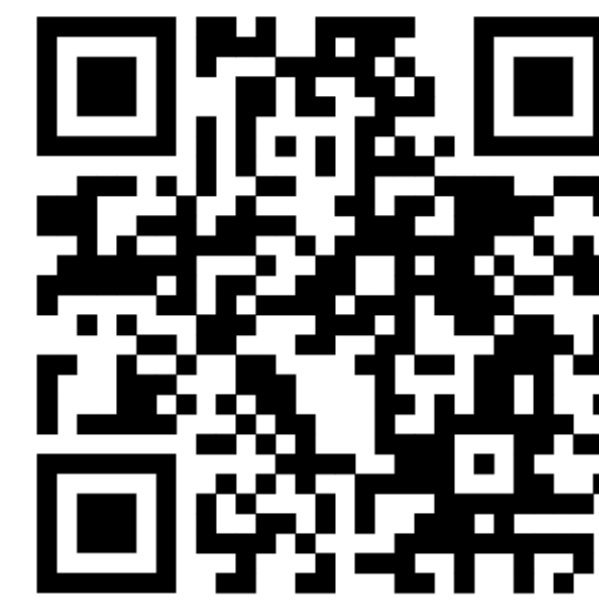


Welcome to the Township of Amaranth Official Plan Review Community Open House – Mapping Updates

Draft Schedule A

Key Changes:

- Updated to show prime agricultural area based on refinement of the LEAR study.
- Updated settlement areas of Laurel and Waldemar to reflect settlement area reallocation exercise
- Refined Environmental Protection area mapping based on Conservation Authority and County mapping.



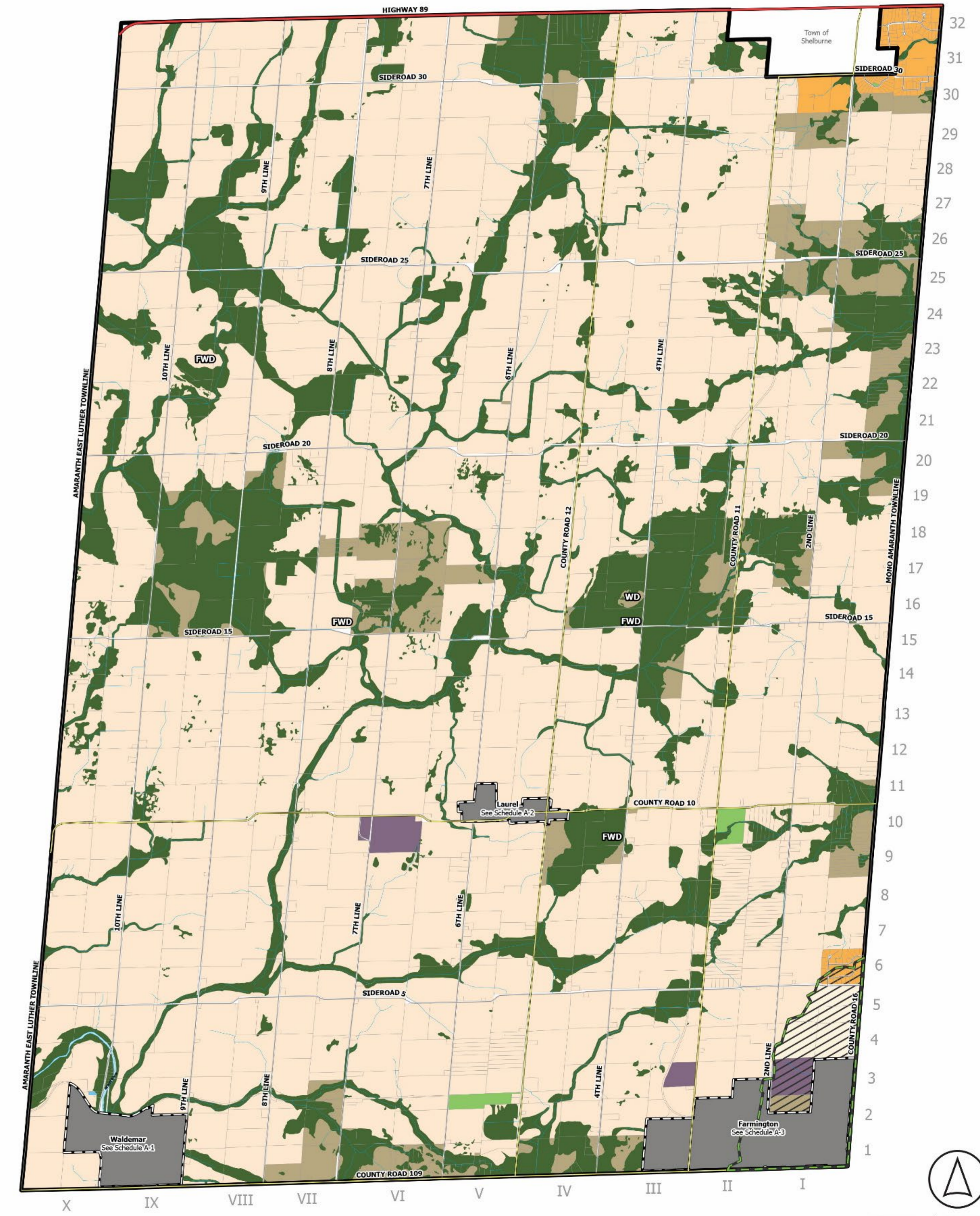
Use your phone camera to scan this barcode for interactive mapping

LEGEND		
	Municipal Boundary	
	Greenbelt Plan Area Boundary	
	Community Settlement Area	
	FWD Former Waste Disposal Site	
	WD Waste Disposal Site	
	Watercourse	
	Waterbody	
Roads		
	Highway	
	County Road	
	Municipal Road	
Land Use		
	Prime Agricultural	
	Rural	
	Community Residential	
	Estate Residential	
	Community Commercial	
	Community Institutional	
	Environmental Protection	
	Open Space / Recreation	
	Employment Area	
	Extractive Industrial	

TOWNSHIP OF AMARANTH
OFFICIAL PLAN
SCHEDULE "A"
LAND USE & TRANSPORTATION

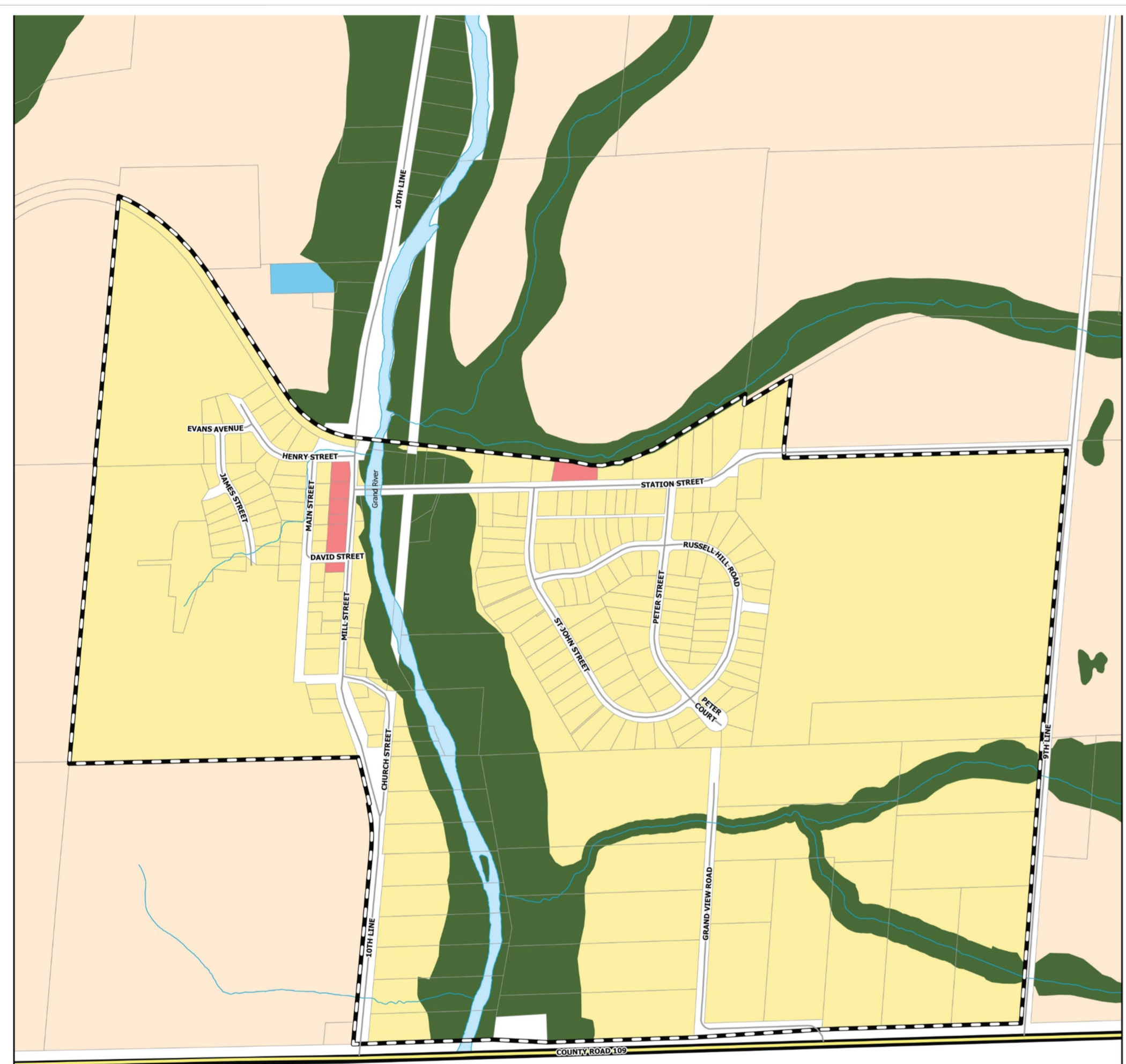
0 0.5 1 2 3 4
Kilometers


Sources:
Produced using data provided by Dufferin County © 2014
Produced using information under license with the Grand River Conservation Authority © Grand River Conservation Authority, 2015
Produced using data provided by Middlesex Valley Conservation © 2015
Produced using data provided by Credit River Conservation © 2015
Produced using data provided by Agriculture and Agri-Food Canada © 2014
Contains information licensed under the Open Government License - Ontario



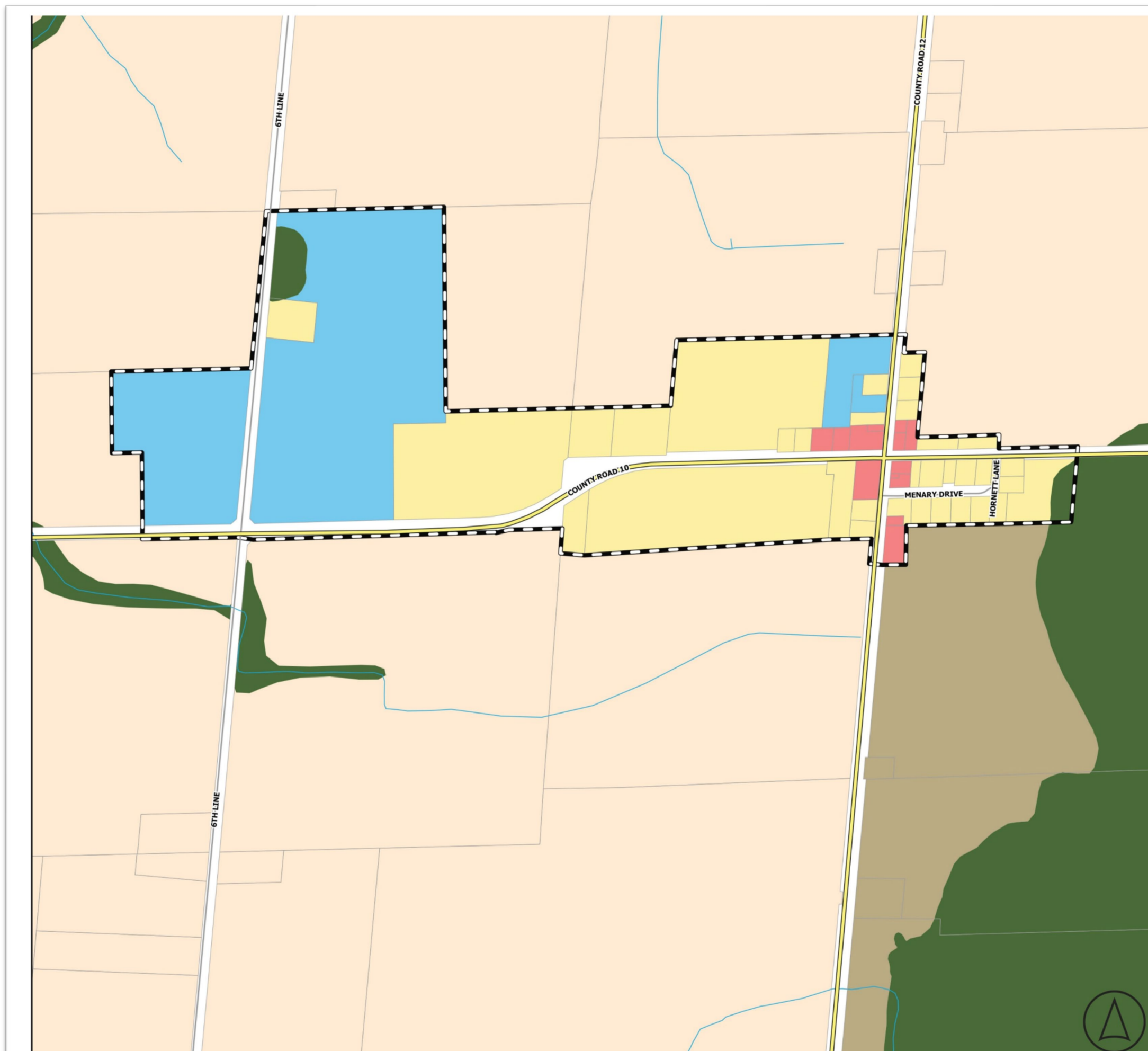
Welcome to the Township of Amaranth Official Plan Review Community Open House – Mapping Updates


Draft Schedule A1



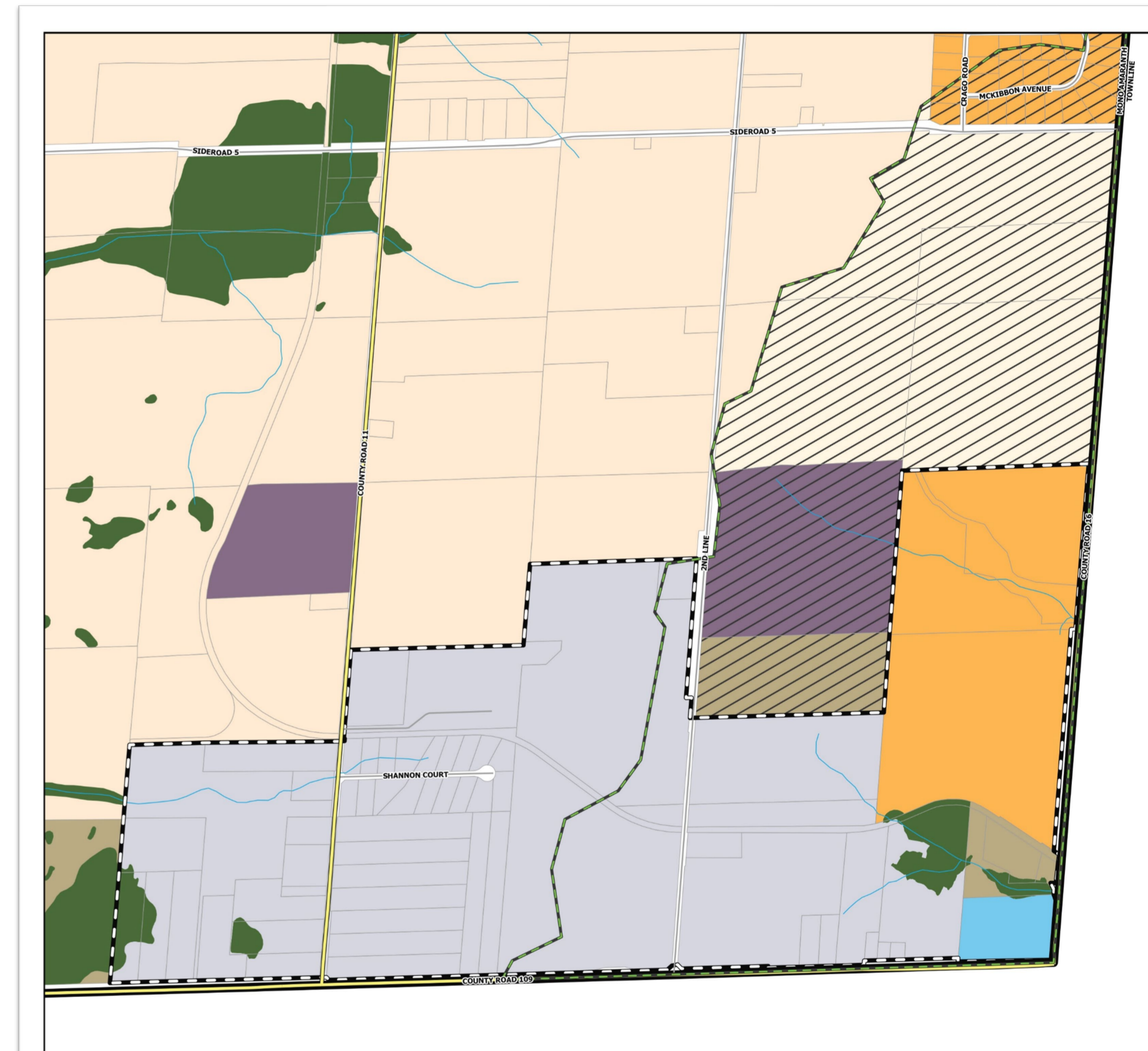
LEGEND		 <p>TOWNSHIP OF AMARANTH OFFICIAL PLAN SCHEDULE "A-1" LAND USE & TRANSPORTATION WALDEMAR</p> <p>0 120 240 480 Meters</p>
<ul style="list-style-type: none"> Municipal Boundary Greenbelt Plan Area Boundary Community Settlement Area Former Waste Disposal Site Waste Disposal Site Watercourse Waterbody Roads Highway County Road Municipal Road 	Land Use <ul style="list-style-type: none"> Prime Agricultural Rural Community Residential Estate Residential Community Commercial Community Institutional Environmental Protection Open Space / Recreation Employment Area Extractive Industrial 	


Draft Schedule A2



LEGEND		 <p>TOWNSHIP OF AMARANTH OFFICIAL PLAN SCHEDULE "A-2" LAND USE & TRANSPORTATION LAUREL</p> <p>0 113 225 450 Meters</p>
<ul style="list-style-type: none"> Municipal Boundary Greenbelt Plan Area Boundary Community Settlement Area Former Waste Disposal Site Waste Disposal Site Watercourse Waterbody Roads Highway County Road Municipal Road 	Land Use <ul style="list-style-type: none"> Prime Agricultural Rural Community Residential Estate Residential Community Commercial Community Institutional Environmental Protection Open Space / Recreation Employment Area Extractive Industrial 	

Draft Schedule A3



LEGEND		 <p>TOWNSHIP OF AMARANTH OFFICIAL PLAN SCHEDULE "A-3" LAND USE & TRANSPORTATION FARMINGTON</p> <p>0 210 420 840 Meters</p>
<ul style="list-style-type: none"> Municipal Boundary Greenbelt Plan Area Boundary Community Settlement Area Former Waste Disposal Site Waste Disposal Site Watercourse Waterbody Roads Highway County Road Municipal Road 	Land Use <ul style="list-style-type: none"> Prime Agricultural Rural Community Residential Estate Residential Community Commercial Community Institutional Environmental Protection Open Space / Recreation Employment Area Extractive Industrial 	

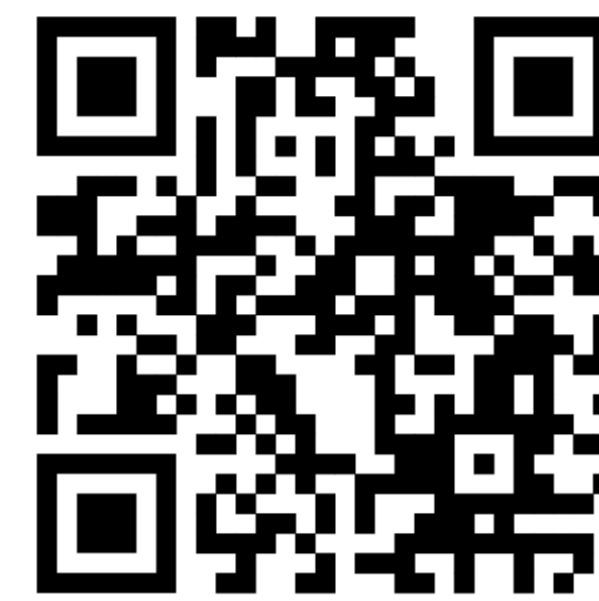


Welcome to the Township of Amaranth Official Plan Review Community Open House – Mapping Updates

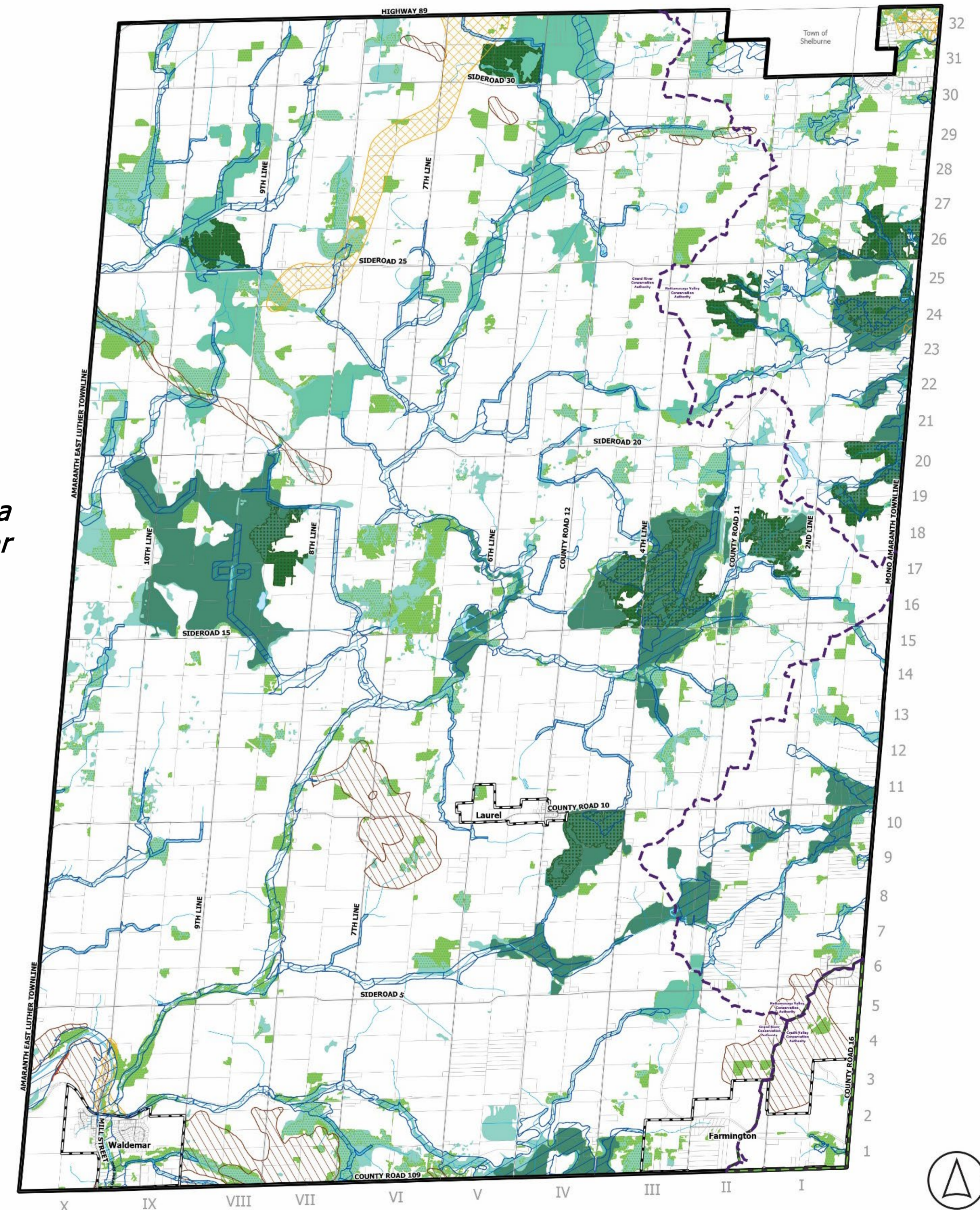
Draft Schedule B

Key Changes:

- Refined Environmental Features mapping based on Provincial, Conservation Authority, and County mapping. Changes are anticipated to be required in the future when the County finishes their updates to the natural heritage system mapping and policies.
- Updated Bedrock and Sand & Gravel Resource Area mapping based on County mapping and ARIP 163.



Use your phone camera to scan this barcode for interactive mapping



LEGEND	
	Municipal Boundary
	Greenbelt Plan Area Boundary
	Community Settlement Area
	Conservation Authority Boundary
	Roads
	Watercourse
	Waterbody
	Floodplain
	Significant Forest Area
	Other Forest Area
	Provincially Significant Wetland
	Locally Significant Wetland
	Other Wetland
	Slope Erosion Hazard
	Bedrock Resource Area
	Sand and Gravel Resource Area

TOWNSHIP OF AMARANTH
OFFICIAL PLAN
SCHEDULE "B"
ENVIRONMENTAL FEATURES

0 0.5 1 2 3 4
Kilometers

Sources:
Produced using data provided by Dufferin County © 2014
Produced using information under license with the Grand River Conservation Authority © Grand River Conservation Authority, 2015
Produced using data provided by Haldimand-Norfolk Conservation © 2015
Produced using data provided by Credit River Conservation © 2015
Produced using data provided by Agriculture and Agri-Food Canada © 2014
Contains information licensed under the Open Government License – Ontario



Welcome to the Township of Amaranth Official Plan Review Community Open House – Mapping Updates

Draft Schedule C

Key Changes:

- Inclusion of updated source water protection areas based on County mapping.

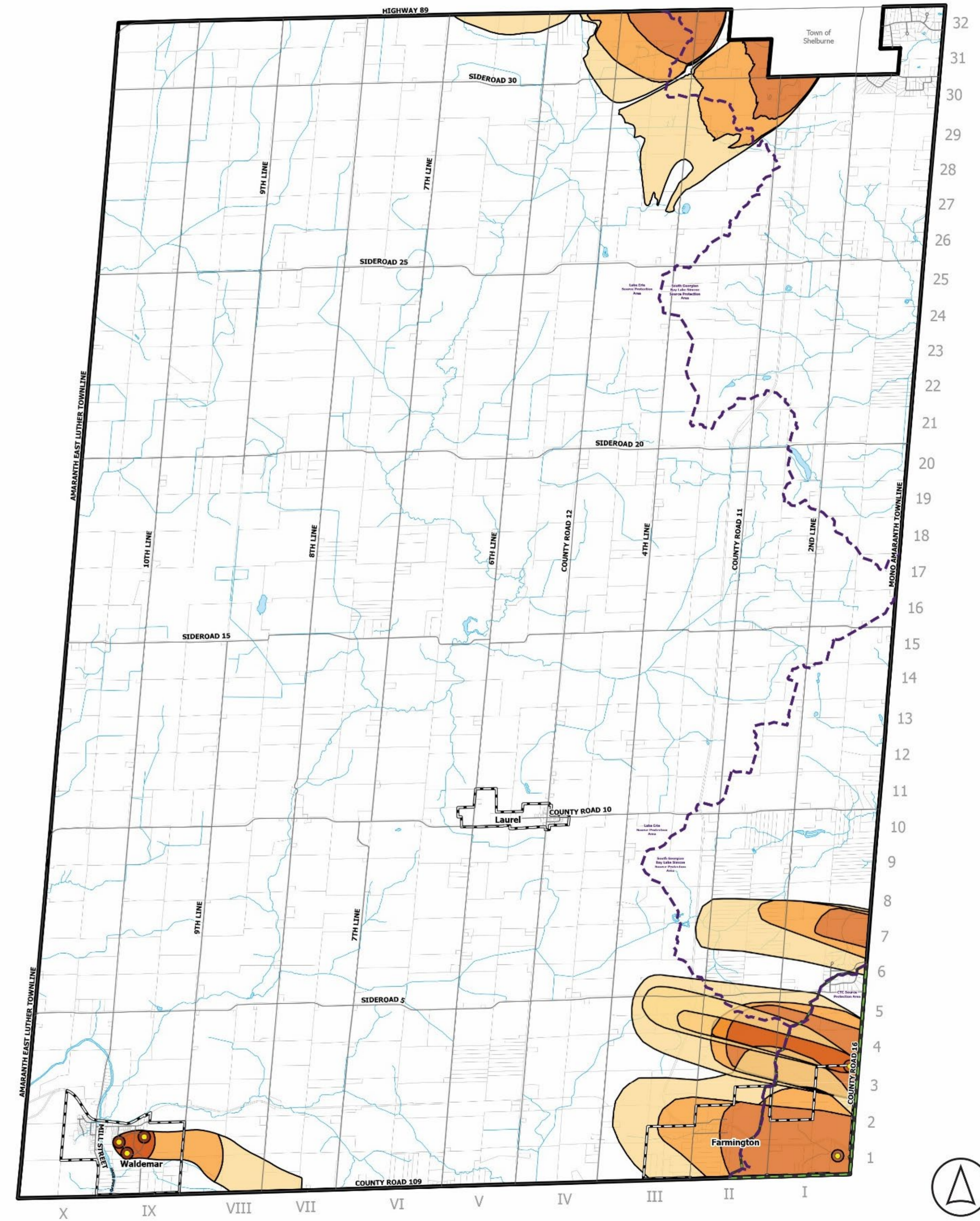


Use your phone camera to scan this barcode for interactive mapping

LEGEND	
	Municipal Boundary
	Greenbelt Plan Area Boundary
	Community Settlement Area
	Source Protection Area Boundary
	Roads
	Watercourse
	Waterbody
Source Water Protection	
	Municipal Wells
	WHPA-A
	WHPA-B
	WHPA-C
	WHPA-D

TOWNSHIP OF AMARANTH
OFFICIAL PLAN
SCHEDULE "C"
SOURCE WATER PROTECTION

Sources:
Produced using data provided by Dufferin County © 2014
Produced using information under License with the Grand River Conservation Authority © Grand River Conservation Authority, 2005
Produced using data provided by Northwest Valley Conservation © 2025
Produced using data provided by Credit River Conservation © 2022
Produced using data provided by Agriculture and Agri-Food Canada © 2014
Contains information licensed under the Open Government License – Ontario



DRAFT March 10, 2026



Welcome to the Township of Amaranth Official Plan Review Community Open House – Key Policy Updates

Key Policy Updates	Page of Draft Official Plan
Permissions for additional residential units (ARUs)	Section 2.6, pg. 15
Permissions for on-farm diversified uses (OFDUs) and clarification of permissions for agricultural-related uses	Sections 5.1.5-5.1.7, pgs. 49-54
Consent policies including for surplus farm dwellings resulting from a farm consolidation	Section 5.8, pg. 54
Policies for settlement area boundary expansions	Section 2.2, pg. 14
Policies for sourcewater protection	Section 3.2.1, pg. 33
Policies for mineral aggregate operations	Section 5.6, pg. 74
Policies for the Greenbelt Protected Countryside (to align with Greenbelt Plan)	Section 5.9, p. 86
Definitions	Chapter 8, pg. 110



Next steps and providing feedback

Next steps

- Obtain feedback and comments from community, Township Council & Staff, and review agencies on Official Plan update.
- Review comments and work with Township staff to finalize Official Plan Plan.
- Present final Official Plan to Council for adoption.

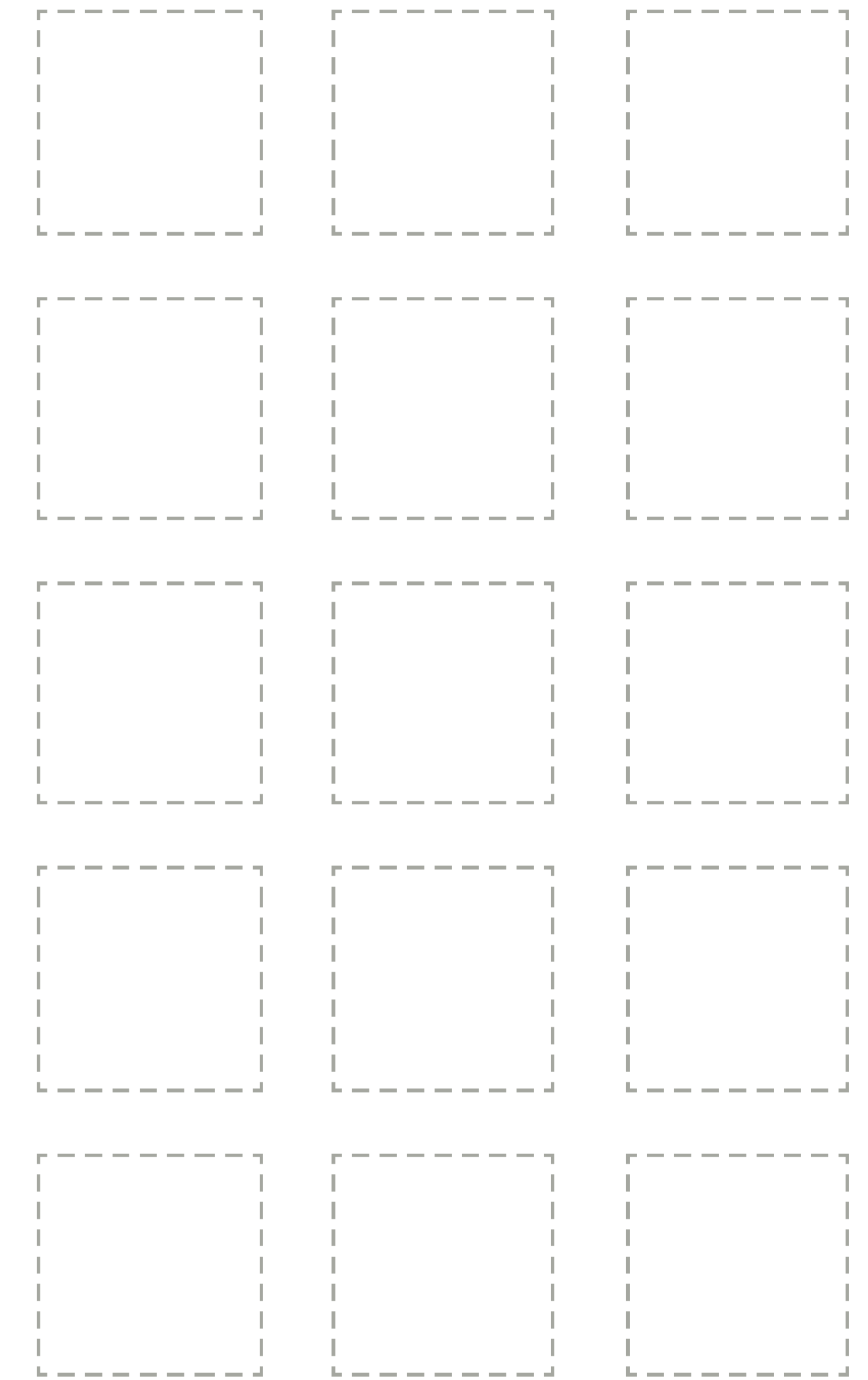
How to provide feedback:

Comment Card 

Mail / Email

Online Interactive Map 

Post-it Notes →



Contact Info

MHBC Project Team:

Pierre Chauvin, MA, MCIP, RPP
Partner
pchauvin@mhbcplan.com



Nick Bogaert, BES, MCIP, RPP
Associate
nbogaert@mhbcplan.com



Chelsea Brooks, MA, MSc, MCIP, RPP
Senior Planner
cbrooks@mhbcplan.com



Township of Amaranth Staff:

Nicole Martin, Dipl. MA
CAO/Clerk
nmartin@amaranth.ca

Additional Information:

For more information, visit the project's website at:
<https://www.amaranth.ca/municipal-government/planning-development/>.

